














### Specifications

| Model  | GTH™-4014 |             |
|--|-----------|-------------|
| Measurements   | Metric    | Imperial    |
| Lifting height maximum with outriggers   | 13.51 m   | 44 ft 4 in  |
| Lifting height maximum without outriggers  | 13.35 m   | 43 ft 10 in |
| Lifting capacity maximum   | 4,000 kg  | 8,818 lbs   |
| Lift capacity at maximum height  | 3,000 kg  | 6,614 lbs   |
| Lift capacity at maximum reach   | 1,250 kg  | 2,756 lbs   |
| Forward reach maximum  | 9.05 m    | 29 ft 8 in  |
| Reach at maximum height on wheels  | 48 cm     | 1 ft 7 in   |
|  Height                             | 2.44 m    | 8 ft        |
|  Height at steering wheel           | 1.60 m    | 5 ft 3 in   |
|  Width                              | 2.42 m    | 7 ft 11 in  |
|  Cab width                          | 93 cm     | 3 ft 1 in   |
|  Track                              | 1.92 m    | 6 ft 4 in   |
|  Wheelbase                          | 2.95 m    | 9 ft 8 in   |
|  Length at front wheels             | 4.83 m    | 15 ft 10 in |
|  Length at fork-holder plate        | 6.57 m    | 21 ft 7 in  |
|  Ground clearance                   | 35 cm     | 1 ft 2 in   |
|  Overall width, outriggers extended | 2.87 m    | 9 ft 5 in   |
|  Overall length                     | 7.77 m    | 25 ft 6 in  |
|  Obstruction angle                 |           | 40°         |
|  Departure angle                  |           | 46°         |

### Productivity

|                                 |                                  |                      |
|---------------------------------|----------------------------------|----------------------|
| Inside/outside turning radius   | 1.87 m/3.55 m                    | 6 ft 2 in/11 ft 8 in |
| Break-out force*                | 6,000 kg                         | 13,228 lbs           |
| Drawbar pull**                  | 6,533 kg                         | 14,403 lbs           |
| Drive speed max.                | 27 km/h                          | 17 mph               |
| Fork-holder plate rotation      |                                  | 138°                 |
| Chassis levelling on front axle |                                  | +/- 6°               |
| Tyres (DIN 70361)               | 405/70-24" PR14 8 hole wheel rim |                      |
| Lifting/lowering speed**        |                                  | 13 sec/8 sec         |
| Extension/retraction speed**    |                                  | 19 sec/15 sec        |

### Power

|                             |  |          |
|-----------------------------|--|----------|
| Engine                      | Perkins 1104D-E44T turbo diesel 100 hp (75 kW), stage IIIA   |          |
| Transmission                | Hydrostatic variable displacement pump linked to variable displacement motor. Both piston type.                    |          |
| Function pumps              | Boom & control system gear pump type:<br>280 Bar, 94 L/min.<br>Service Brake gear pump type:<br>250 Bar, 44 L/min. |          |
| Fuel tank capacity          | 170 L  | 45 gal   |
| Engine oil capacity         | 9.6 L  | 2.5 gal  |
| Hydraulic oil tank capacity | 112 L  | 29.6 gal |

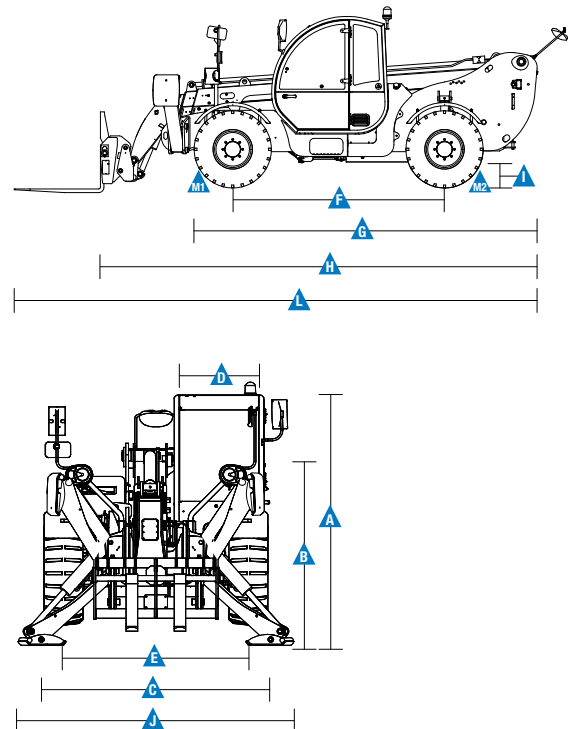
**Weight\*\*\*** 11,240 kg 24,780 lbs

### Standards Compliance

AS 1418.19

Operating cab conforms to ISO 3471 (ROPS) and ISO 3449 (FOPS)

### Measurements



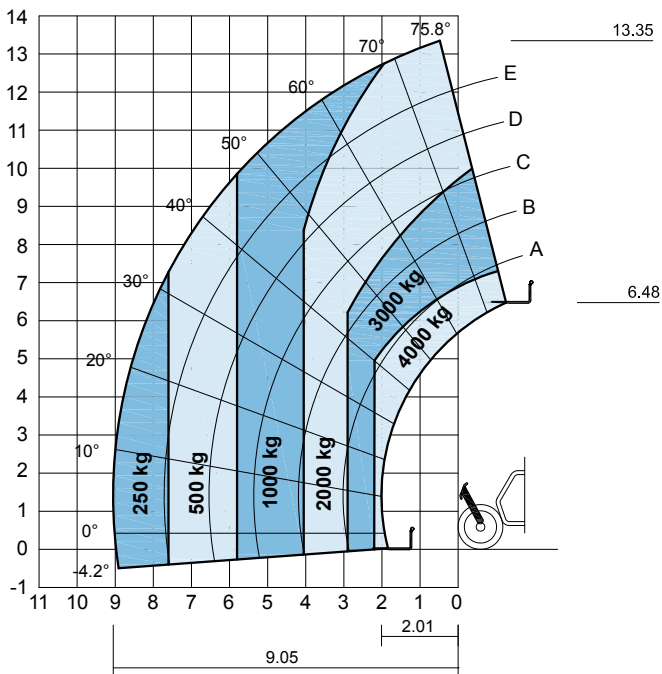
\* With 800 L shovel SAE J 732/80

\*\* Without load

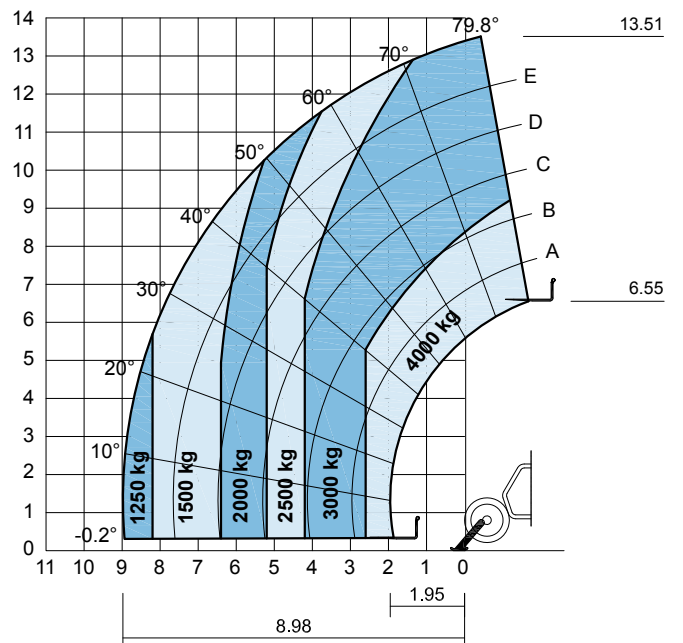
\*\*\* Weight will vary depending on options and/or country standards

### Load Charts

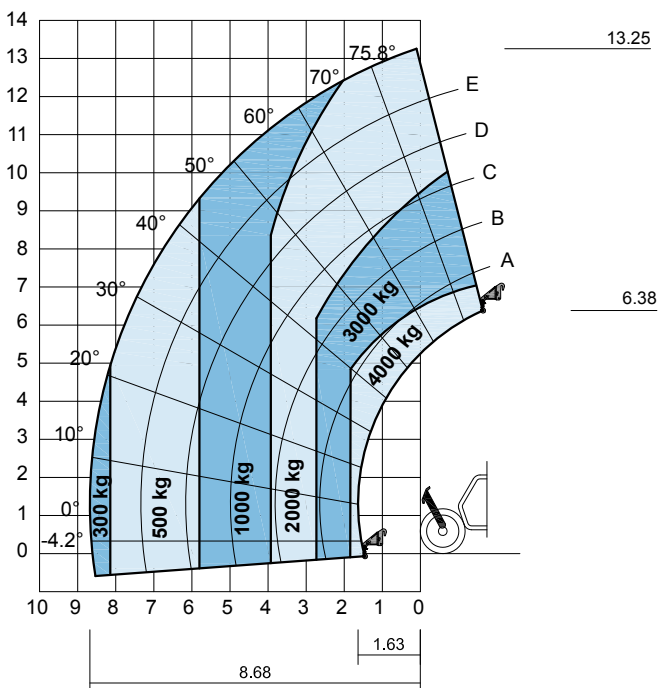
**On tyres with forks**



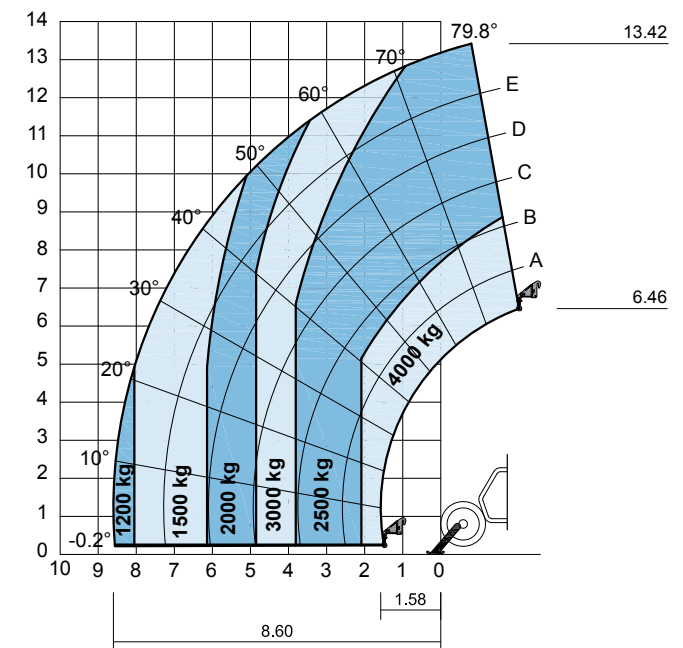
**On outriggers with forks**



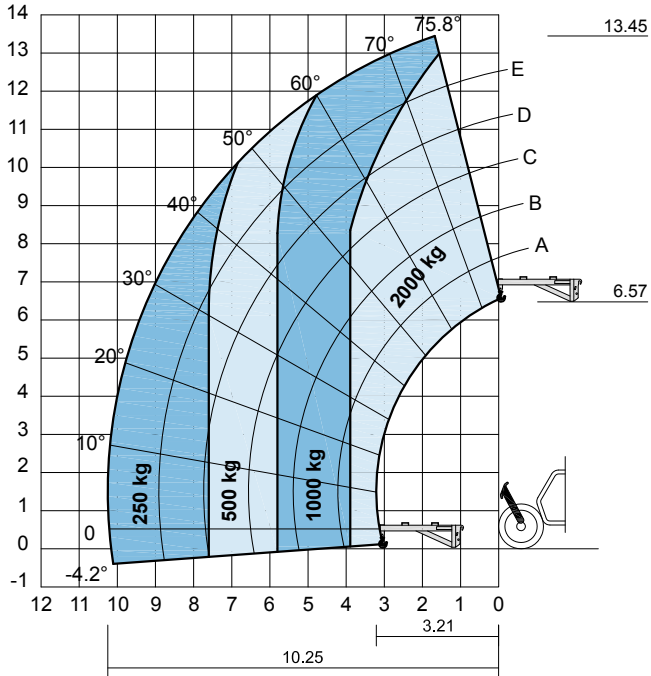
**On tyres with fixed hook**



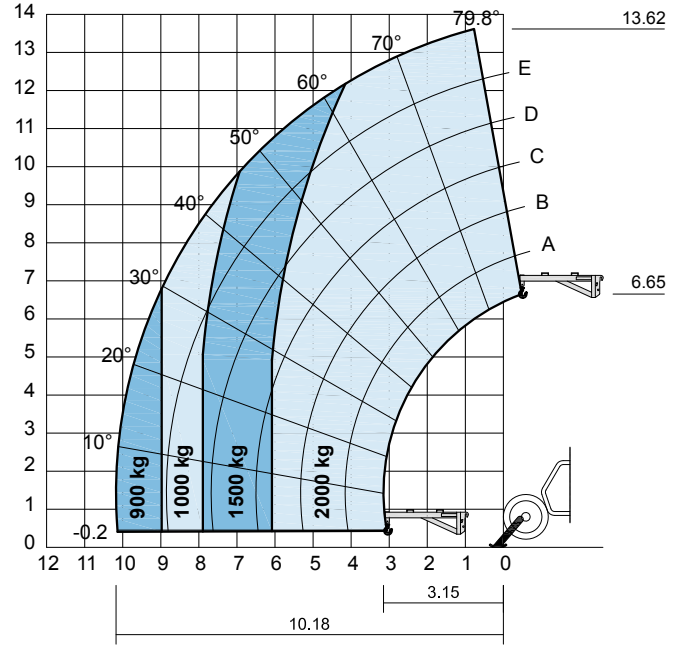
**On outriggers with fixed hook**



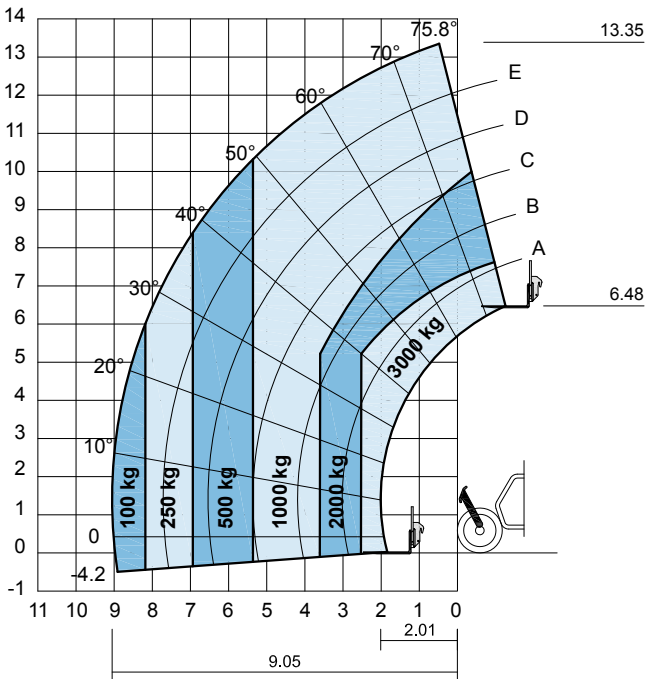
On tyres with 2 m jib



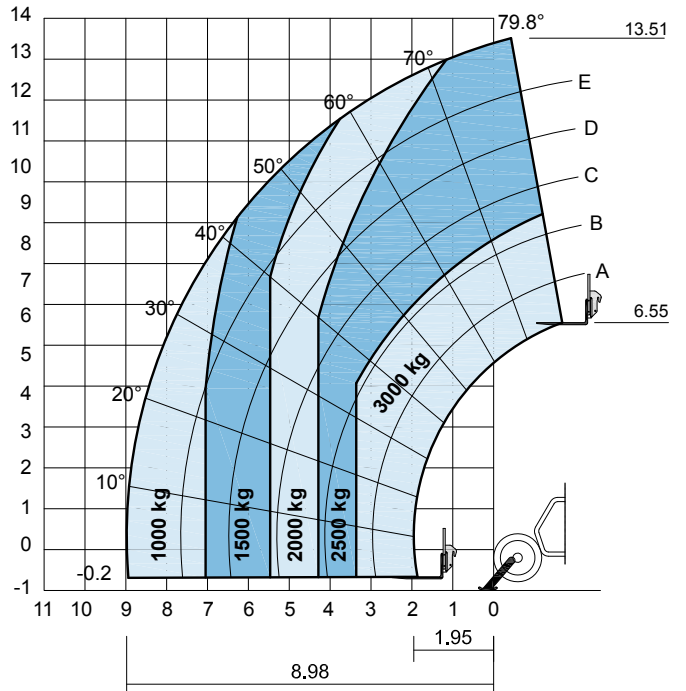
On outriggers with 2 m jib



On tyres with side shift forks

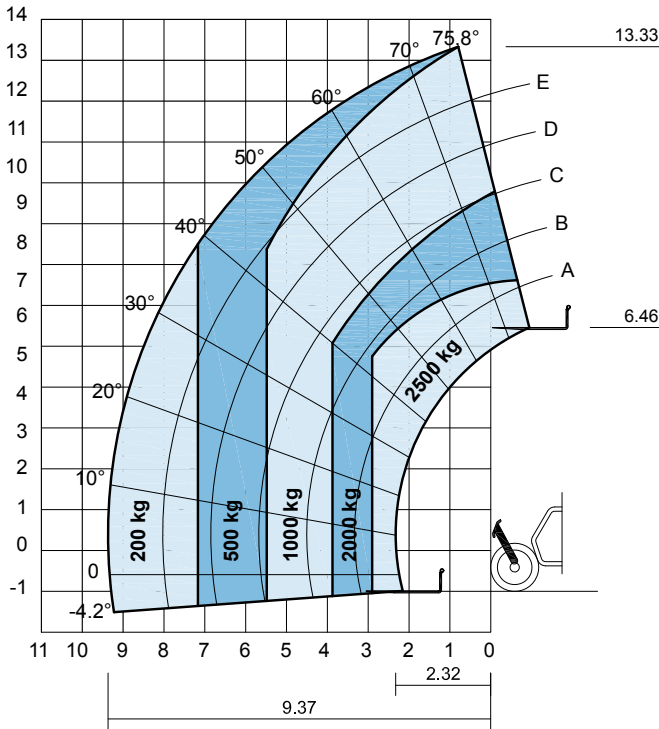


On outriggers with side shift forks

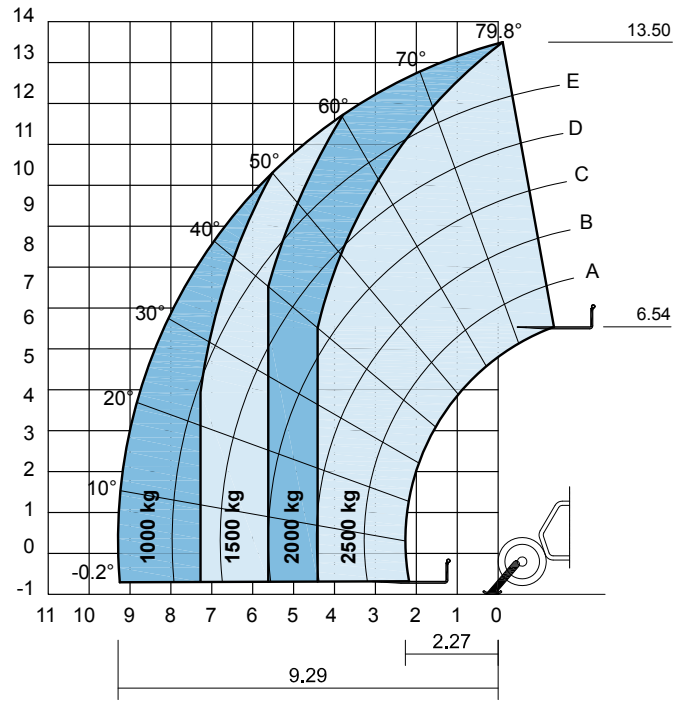


### Load Charts

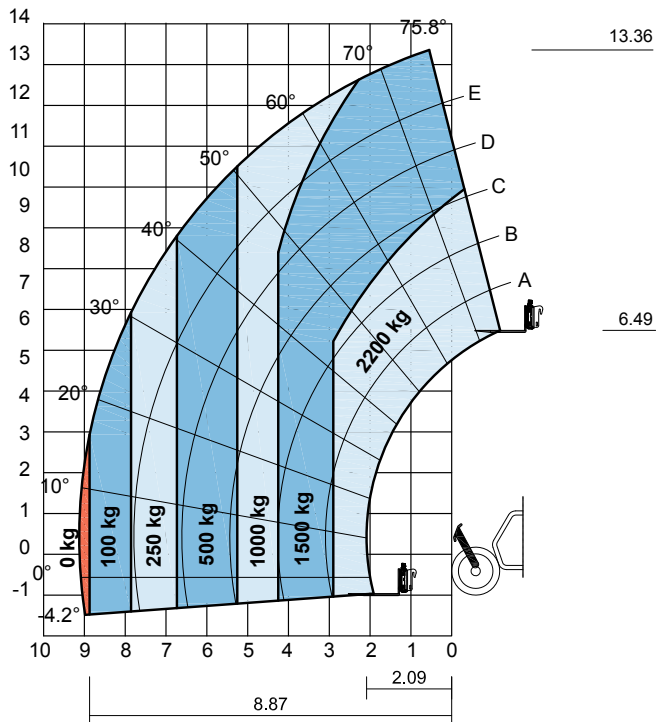
On tyres with extended forks



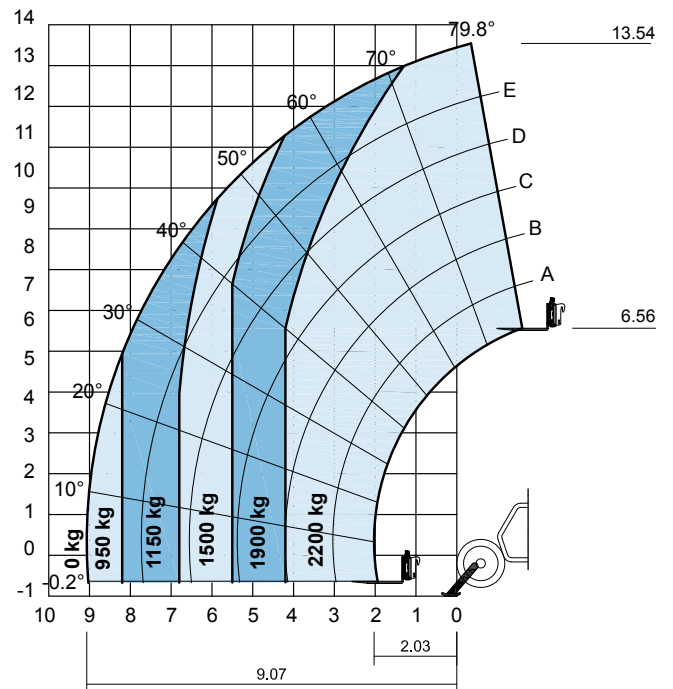
On outriggers with extended forks



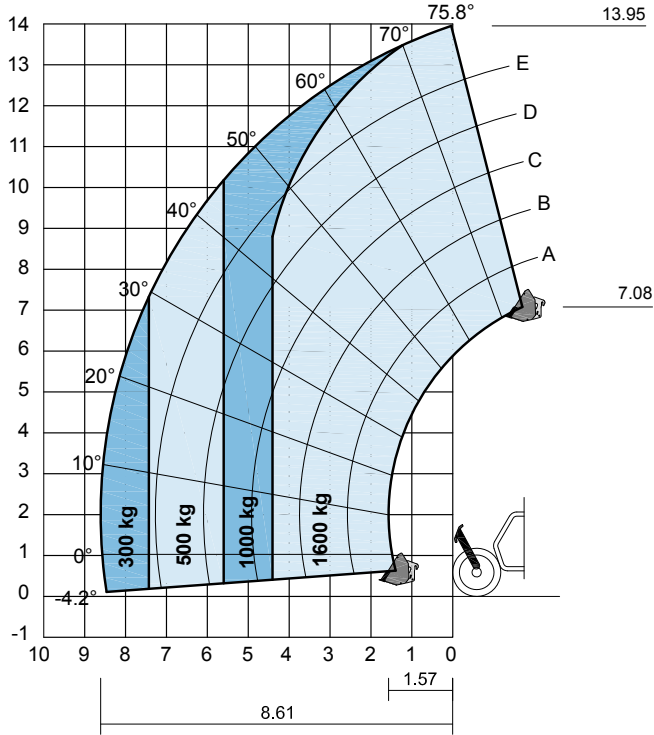
On tyres with fork rotator



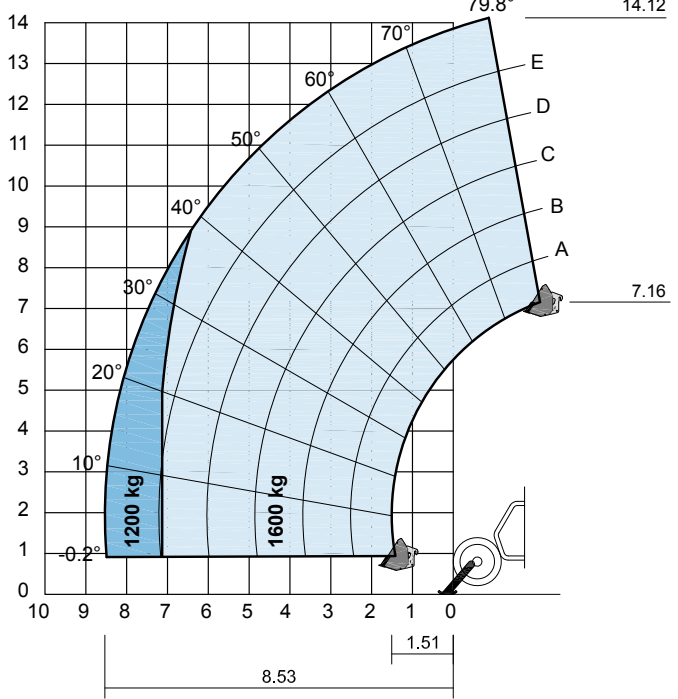
On outriggers with fork rotator



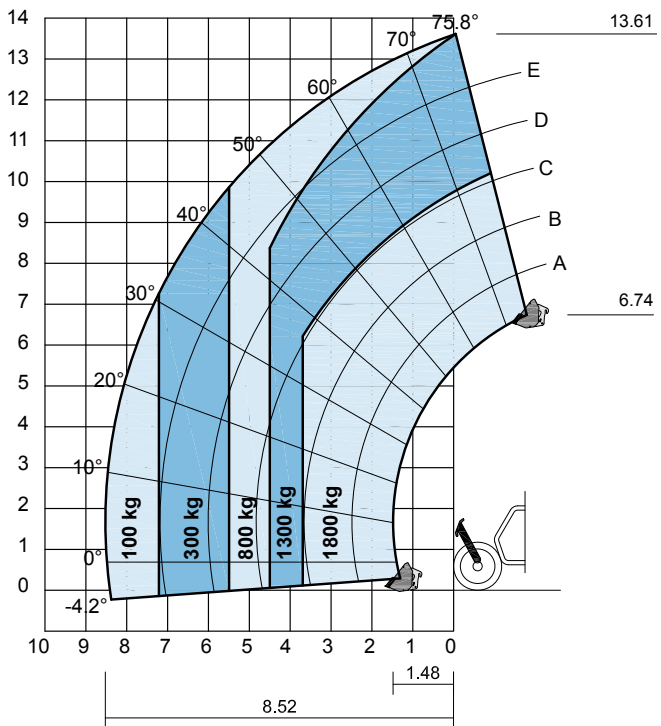
**On tyres with 800 L GP bucket**



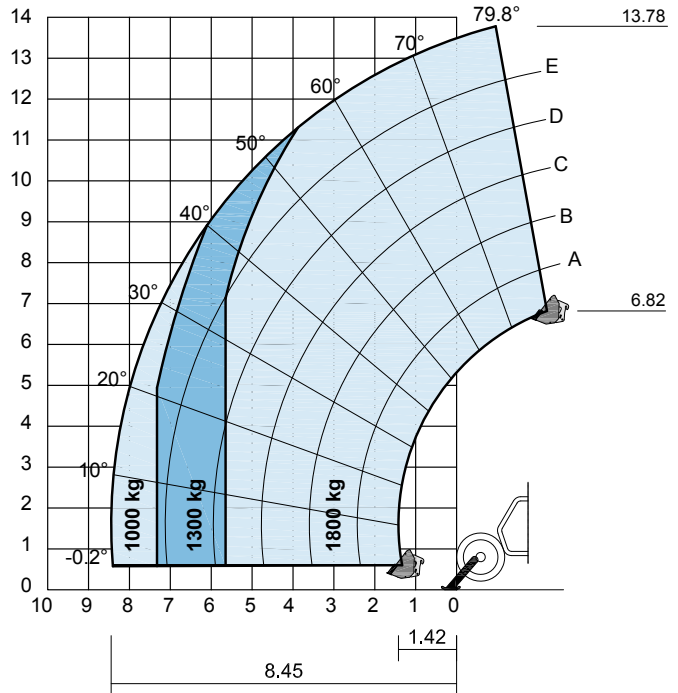
**On outriggers with 800 L GP bucket**



**On tyres with 4-in-1 bucket 900 L**



**On outriggers with 4-in-1 bucket 900 L**



## Features

### Standard Features

#### Measurements

- 4,000 kg (8,818 lb) maximum lift capacity
- 13.51 m (44 ft 4 in) maximum lift height
- 9.05 m (29 ft 8 in) maximum forward reach

#### Productivity

- 4WD
- Four wheel steer
- 3 steering modes:
  - front wheel steer
  - crab steer
  - coordinated steer
- Power assisted steering
- Front outriggers
- Hydrostatic transmission with variable displacement pump
- Multifunction electroproportional 4x1 joystick
- Limited slip differential on front axle
- Two-section door (glass upper/steel lower)
- Angle and length indicators on boom correspond to load charts
- Adjustable suspended seat with operator detection seat contact switch
- Battery disconnection switch
- Large diameter steering wheel
- Front & rear windscreen wipers
- Sunshield
- Roof protection grid
- Two side view mirrors & rear fish eye mirror
- Front & rear lights
- Side mounted engine for easy access to components
- Oil immersed, multi-disc brakes on both axles
- Lockable fuel tank
- Maintenance collar
- Rear wheel alignment system
- Road/jobsite switch
- Air conditioning
- Hydraulic line on boom

- Load Management System (LMS) with:
  - Dynamic colour coded load chart
  - 7" colour display
  - Reversing camera
  - Optional front camera
  - Optional iButton user access control
- Hydraulic quick coupling for attachments
- Windshield protection grid

#### Power

- Perkins turbo charged diesel engine 100 hp (75 kW), stage IIIA

#### Tyres

- 405/70-24" PR14, 8 holes wheel rim

### Options & Accessories

#### Productivity

- Adjustable spotlight on boom and cabin
- Biodegradable hydraulic oil
- 10 t hydraulic jack + 24 mm box wrench

#### Attachments

- Genie has a large range of attachments available. Please contact Genie or your nearest Genie telehandler dealer.



Genie – Toll free number 1800 788 633

#### Brisbane

HEAD OFFICE  
33 Kimberley Street  
Darra QLD 4076

#### Sydney

74 Glendenning Road  
Glendenning NSW 2761

#### Melbourne

133 Logis Boulevard  
Dandenong Sth VIC 3175

#### Adelaide

16-18 Nixon Road  
Wingfield SA 5013

#### Perth

126 Sheffield Road  
Welshpool WA 6106

#### Darwin

33 McCourt Road  
Yarrowonga NT 0830

#### Genie USA

18340 NE 76th Street  
P.O. Box 97030  
Redmond, Washington  
98073-9730

#### Distributed By:

Effective Date: June, 2015. Product specifications and prices are subject to change without notice or obligation. The photographs and/or drawings in this document are for illustrative purposes only. Refer to the appropriate Operator's Manual for instructions on the proper use of this equipment. Failure to follow the appropriate Operator's Manual when using our equipment or to otherwise act irresponsibly may result in serious injury or death. The only warranty applicable to our equipment is the standard written warranty applicable to the particular product and sale and we make no other warranty, express or implied. Products and services listed may be trademarks, service marks or trade names of Terex Corporation and/or their subsidiaries in the USA and many other countries. Genie is a registered trademark of Terex South Dakota, Inc. © 2015 Terex Corporation.